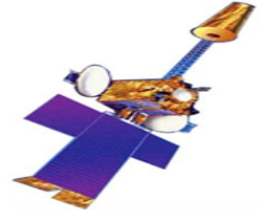


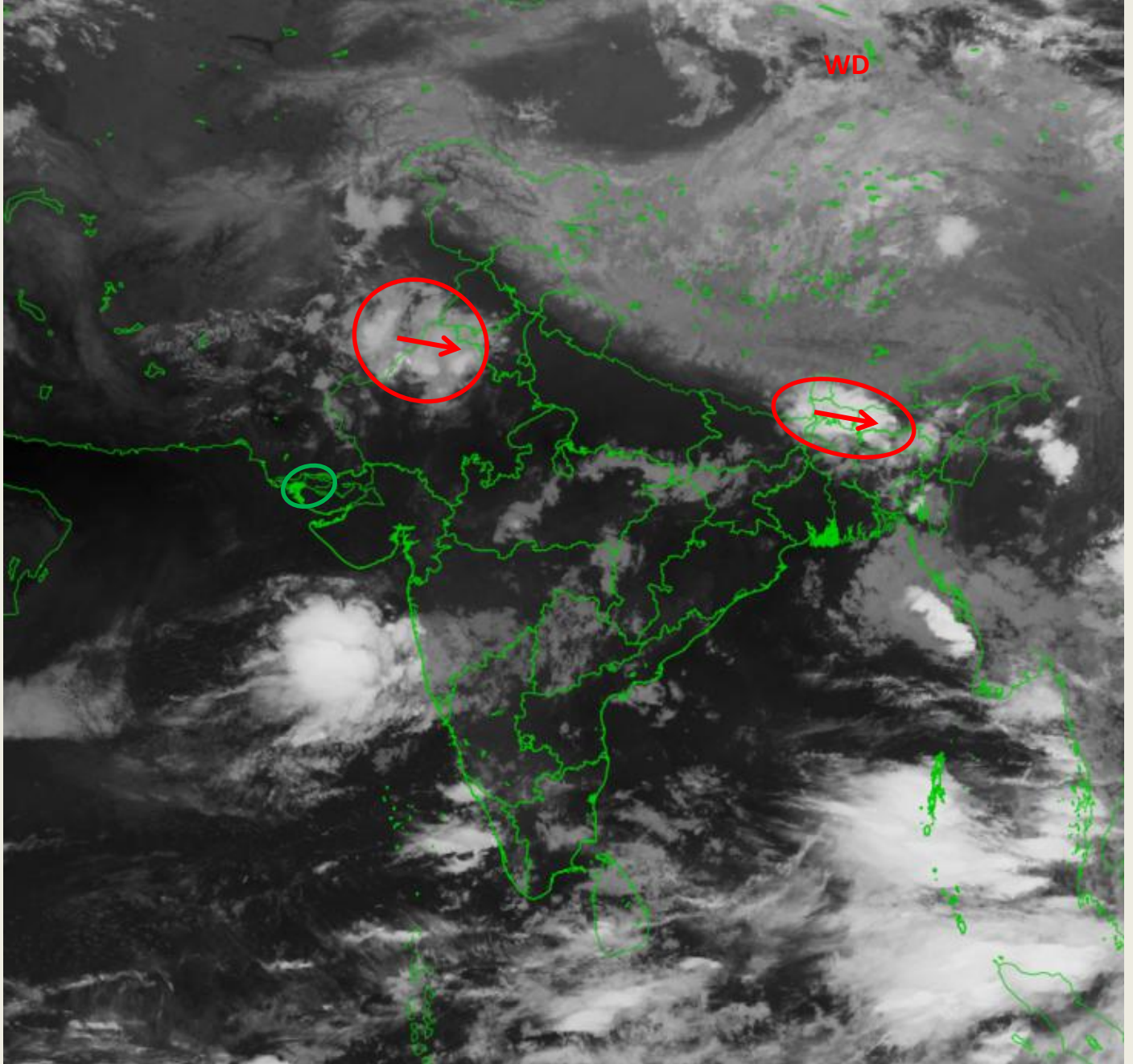


भारत मौसम विज्ञान विभाग  
पृथ्वी विज्ञान मंत्रालय  
India Meteorological Department  
Ministry of Earth Sciences



**SATELLITE BULLETIN BASED ON SATELLITE IMAGERIES  
AND PRODUCTS**

**18.06.2018 TIME 0000 UTC**



**RED: DEVELOPED (-60° and colder)    GREEN: DEVELOPING (-40° to -60°)**  
**BLUE: WEAK (-40° and warmer)**

**THUNDERSTORM ADVISORY FOR NEXT 3 HRS:-**

THUNDERSTORM/CONVECTIVE CELLS LIKELY TO MOVE OVER N RAJ NE BHR SHWB SKM W ASSAM MEGHA (.) FOR DETAILS KINDLY REFER TO <http://www.rapid.imd.gov.in/>

**INTENSE PRECIPITATION ADVISORY FOR NEXT 3 HRS:-**

MODERATE RAINFALL SPELL (5-15 mm/hr) LIKELY N RAJ KKN N KER NE BHR SKM SHWB MEGHA TRP(.) LIGHT RAINFALL SPELL (<5 mm/hr) LIKELY OVER GOA W MP ASSAM MIZO & TN (.) FOR DETAILS KINDLY REFER TO <http://sigma.cptec.inpe.br/scope/>

TCIN50 DEMS 180000

SATELLITE BULLETIN BASED ON INSAT PIC OF 180000 UTC (.)

REGION COVERED BETWEEN LAT 50.0°N TO 30.0°S AND LONG 40.0°E TO 125.0°E (.)

**CLOUDS DESCRIPTIONS WITHIN INDIA :-**

**NORTH**

SCT LOW/MED CLOUDS WITH EMBDD WK TO MOD CONVTN OVER EXT SW PJB W HARY(.)  
SCT LOW/MED CLOUDS OVER J&K UTRKND HP REST HARY (.)

**EAST:-**

BKN LOW/MED CLOUDS WITH EMBDD MOD TO INT CONVTN OVER EXT NE BHR SKM SHWB  
MEGHA TRP SE ASSAM AND ISOL WK CONVTN OVER MIZO & ISOL TO SCT LOW/MED  
CLOUDS OVER REST PARTS OF THE REGION (.)

**WEST:-**

SCT LOW/MED CLOUDS WITH EMBDD MOD TO INT CONVTN OVER KKN N RAJ (.) SCT  
LOW/MED CLOUDS OVER REST PARTS OF THE REGION EXCEPT W GUJ EXT SE RAJ (.)

**SOUTH:**

BKN LOW/MED CLOUDS WITH EMBDD MOD TO INT CONVTN OVER N KER BAY ILS (.) SCT  
LOW/MED CLOUDS WITH EMBDD ISOL WK TO MOD CONVTN OVER REST PARTS OF THE  
REGION EXCEPT SCT LOW/MED CLOUDS OVER RYLSMA SIK NC AP EXT S TN (.)

**ARABIAN SEA:-**

SCT LOW/MED CLOUDS WITH EMBDD MOD TO INT CONVTN OVER EC ARSEA (.) SCT  
LOW/MED CLOUDS WITH EMBDD WK TO MOD CONVTN OVER SE ARSEA COMORIN &  
MALDIEVES (.)

**BAY OF BENGAL & ANDAMAN SEA:-**

BKN LOW/MED CLOUDS WITH EMBDD INT CONVTN OVER EC AND SE BAY ANDAMAN SEA &  
GULF OF MARTABAN & TENASSERIM COT (.)

**CLOUDS DESCRIPTION OUTSIDE INDIA :-**

SCT LOW/MED CLOUDS WITH EMBDD MOD TO INT CONVTN OVER SRILANKA TIBET ADJ  
CHINA NW MYANMAR SUMATRA ADJ W COT MALAY PENINSULA THAILAND GULF OF  
THAILAND CAMBODIA LAOS VIETNAM HAINAN TAIWAN S CHINA SEA BORNEO CELEBES  
ILS & SEA MINDANAO PHILIPPINES AND OVER INDIAN OCEAN BET 5.0N TO 9.0S EAST OF  
LONG 61.0E (.)

TOO: 18/0625 EF=

**EGEND:-**

|                       |               |   |
|-----------------------|---------------|---|
| CLOUD<br>DISTRIBUTION | ISOL          | ISOLATED (LESS THAN 25%)                            |
|                       | SCT           | SCATTERED (25 TO 50%)                               |
|                       | BKN           | BROKEN (51 TO 75%)                                  |
|                       | SLD           | SOLID (GREATER THAN 75%)                            |
| TEMPERATURE           | CTT           | CLOUD TOP TEMPERATURE                               |
| CONVECTION            | WK<br>CONVTN  | WEAK CONVECTION (CTT GREATER<br>THAN -25°C)         |
|                       | MOD<br>CONVTN | MODERATE CONVECTION (CTT<br>BETWEEN -25°C TO -40°C) |
|                       | INT           | INTENSE <u>CONVECTION</u> (CTT BETWEEN -            |

|   |                           |  |
|---|---------------------------|--|
|   | CONVTN                    | 41°C TO -70°C)                                   |
|   | V INT<br>CONVTN           | VERY INTENSE CONVECTION (CTT LESS<br>THAN -70°C) |
| <b>METEOROLOGICAL<br/>SUB-DIVISION,<br/>STATES, &amp; 5 UTS</b> | ARUPR                     | ARUNACHAL PRADESH                                |
|   | BHR                       | BIHAR  |
|   | CHTGH                     | CHHATTISGARH                                     |
|   | COTL AP                   | COASTAL ANDHRA PRADESH                           |
|   | COT L<br>KRNTK            | COASTAL KARNATAKA                                |
|   | COTL ORS                  | COASTAL ORISSA                                   |
|   | GUJ                       | GUJARAT  |
|   | GWB                       | GANGETIC WEST BENGAL                             |
|   | HARY                      | HARYANA  |
|   | HP                        | HIMACHAL PRADESH                                 |
|   | J&K                       | JAMMU AND KASHMIR                                |
|   | JHRKND                    | JHARKHAND  |
|   | KER                       | KERALA   |
|   | KKN                       | KONKAN   |
|   | LKSDP                     | LAKSHADWEEP                                      |
|   | M MAHA                    | MADHYA MAHARASHTRA                               |
|   | MAHA                      | MAHARASHTRA                                      |
|   | MANI                      | MANIPUR  |
|   | MEGHA                     | MEGHALAYA  |
|   | MIZO                      | MIZORAM  |
|   | MP                        | MADHYA PRADESH                                   |
|   | MRTHWD                    | MARATHWADA                                       |
|   | NAGA                      | NAGALAND   |
|   |                           | NORTH COASTAL ANDHRA PRADESH                     |
|   | NIK                       | NORTH INTERIOR KARNATAKA                         |
|   | ORS                       | ORISSA   |
|   | PJB                       | PUNJAB   |
|   | RAJ                       | RAJASTHAN  |
| RYLSM   | RAYALASEEMA               |  |
| SAU &<br>KUTCH  | SAURASHTRA & KUTCH        |  |
| SHWB  | SUB-HIMALAYAN WEST BENGAL |  |

|                      |               |                                 |
|----------------------|---------------|---------------------------------|
|                      | <b>SIK</b>    | <b>SOUTH INTERIOR KARNATAKA</b> |
|                      | <b>SKM</b>    | <b>SIKKIM</b>                   |
|                      | <b>TLNGN</b>  | <b>TELANGANA</b>                |
|                      | <b>TN</b>     | <b>TAMIL NADU</b>               |
|                      | <b>TRP</b>    | <b>TRIPURA</b>                  |
|                      | <b>UP</b>     | <b>UTTAR PRADESH</b>            |
|                      | <b>UTRKND</b> | <b>UTTARAKHAND</b>              |
|                      | <b>VID</b>    | <b>VIDHARBHA</b>                |
|                      | <b>WB</b>     | <b>WEST BENGAL</b>              |
|                      | <b>ARSEA</b>  | <b>ARABIAN SEA</b>              |
|                      | <b>ILS</b>    | <b>ISLANDS</b>                  |
| <b>MISCELLANEOUS</b> | <b>ASSW</b>   | <b>IN ASSOCIATION WITH</b>      |
|                      | <b>ASSTD</b>  | <b>ASSOCIATED</b>               |
|                      | <b>CIR</b>    | <b>CIRCULATION</b>              |
|                      | <b>EMBDD</b>  | <b>EMBEDDED</b>                 |
|                      | <b>N/HOOD</b> | <b>NEIGHBOURHOOD</b>            |
|                      | <b>EXT</b>    | <b>EXTREME</b>                  |